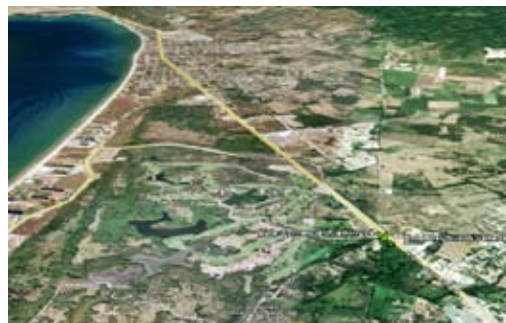
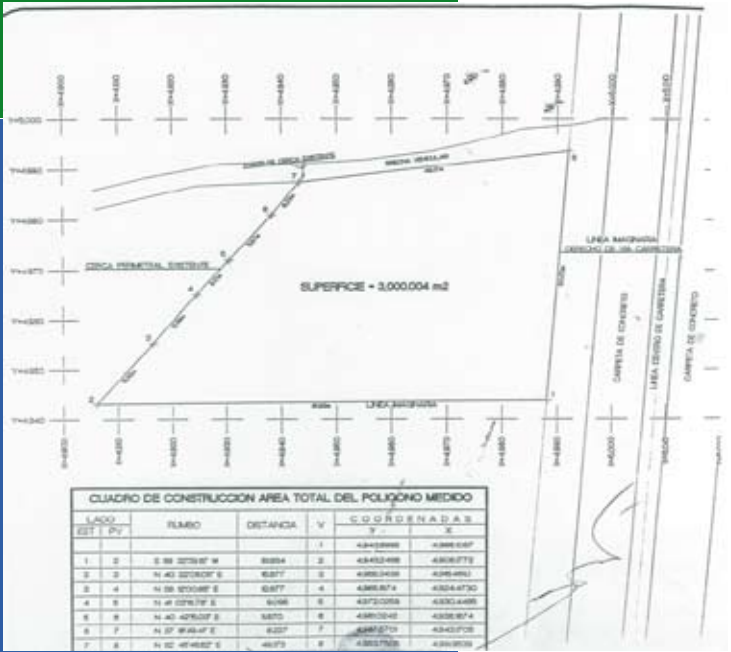




LOTE COMERCIAL FLAMINGOS FLAMINGOS AREA



www.pvre.com

E-mail: info@pvre.com

Puerto Vallarta Real Estate®
Av. México # 1320 Local 2
Col. 5 de Diciembre C.P 48350
Puerto Vallarta Jalisco México.

Phone: (322) 222-4288

Fax: (322) 222-4287

Skype User: PVREALTY

www.youtube.com/pvrealty

www.facebook.com/pvrealstate

33 - 402

For Sale

\$ 590,000 USD

Land Size Approx: 3000 M2 32291.73 Sq. Ft.

Views: Front Highway, Mountains, Stores



Puerto Vallarta Real Estate® - Superb location and price (only \$18.22 USD per sq. ft.) for this investment lot fronting onto the Highway from Puerto Vallarta to Punta Mita in the Flamingos area.

This lot has 50 meters (538.19 sq. ft.) of frontage to the highway and the perfect size for a commercial or mixed use development.

Listing Agent: Silvia L. Elias **E-mail:** silvia@pvre.com

Puerto Vallarta Real Estate® This material is based upon information which we consider reliable, but because it has been supplied by third parties, we cannot represent that is accurate or complete, and it should not be relied upon as such. This offering is subject to errors, omissions, change of price or sale withdrawal without notice.

